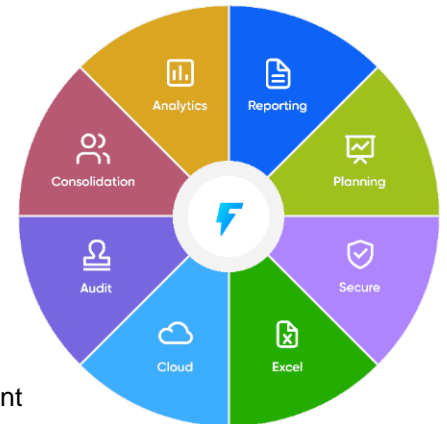


Fast Powerful Real-Time CPM with the control of a BI system and the ease of use of Excel

## Corporate Performance Management

FastClose goes beyond financial reporting solutions, delivering real-time Corporate Performance Management that spans the full spectrum of Epicor, SAP Business One, Nextworld, and Unit 4 Coda functionality.

Every ERP Module is covered. FastClose delivers 89 Templates and 72 report Solutions to provide value right away. Your Business Users will produce financial and operational reports for every ERP module. There's no need to wait for an IT request to be fulfilled.



- GL** General Ledger
- AP** Accounts Payable
- AR** Accounts Receivable
- SOP** Sales Order Processing
- PRJ** Projects
- INV** Inventory
- POP** Purchase Order Processing
- FA** Fixed Assets
- DM** Demand Management
- MFG** Manufacturing
- BNK** Banking

## Really Real-Time

Every report run in FastClose returns up-to-the-moment ERP data, real-time, not near-real-time from synced or replicated data. This means all data updates, including GL postings, Parts and Orders saved just now, everything, all your ERP data is instantly reflected by FastClose.

## Drill Around

FastClose "drill anywhere" technology allows users to fluidly surf the numbers, from the Job that requires stock, through purchasing and invoicing, to the impact on inventory and GL. Drill to drill to drill following the numbers as they flow through the modules. That takes modular breadth, and FastClose has it.

## On Premise or Cloud

FastClose works in any hosting model, whether On-Premises or Private Cloud or Public Cloud.

## Bring Your Own Device

Get the information you need wherever you are when you run your FastClose reports and visualizations in a web browser on PC, Mac, iPhone, or Android.

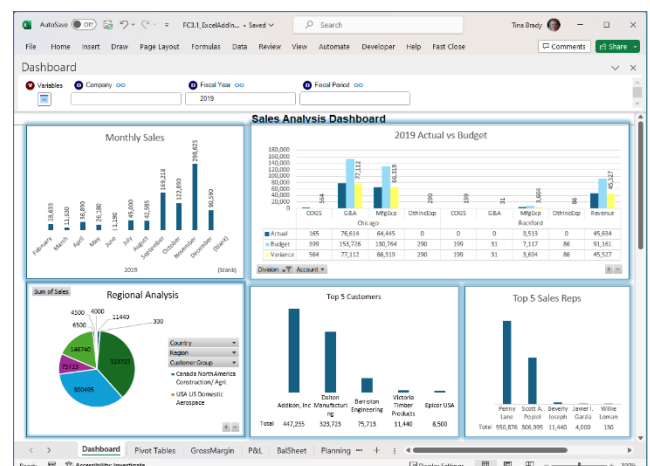
## Visualize the Power of your ERP

Monitor the key performance indicators of your business with dashboards and charts in Excel and Power BI.

## Try It Before You Buy It

Any software can demo well. What matters is how it functions for your users in the real world. Get a free trial of FastClose and be certain you're selecting the right reporting solution for your business. We will install FastClose, fully-functioning, with all the features and ERP modules, so your team can test it out with your own ERP system.

That's a risk-free proposition.



Visualize Your Business with KPIs in Excel

FastClose is the first company to build an Accounting Intelligence reporting solution specifically designed to put the key to your ERP data into the hands of the Business.

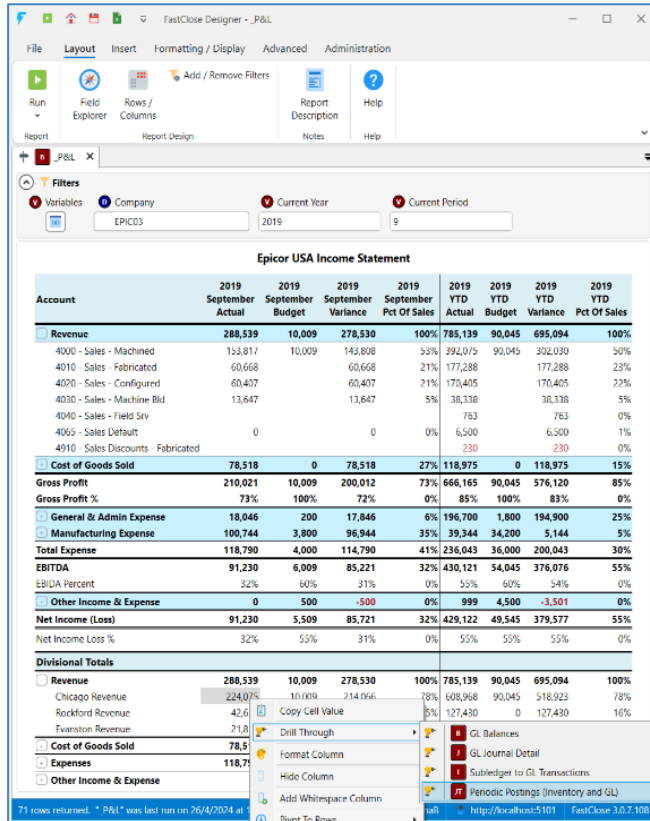




## Designer

For Power-Users to build formatted reports with Filters, Hierarchies, Calculations, and Drills.

Empower your Business Users with an unsurpassed palette of reporting features.



**Epicor USA Income Statement**

Account	2019 September Actual	2019 September Budget	2019 September Variance	2019 September Pct Of Sales	2019 YTD Actual	2019 YTD Budget	2019 YTD Variance	2019 YTD Pct Of Sales
<b>Revenue</b>	<b>288,539</b>	<b>10,009</b>	<b>278,530</b>	<b>100%</b>	<b>785,139</b>	<b>90,045</b>	<b>695,094</b>	<b>100%</b>
4000 - Sales - Machined	153,817	10,009	143,808	53%	392,075	90,045	302,030	50%
4010 - Sales - Fabricated	60,668		60,668	21%	177,288		177,288	23%
4020 - Sales - Configured	60,407		60,407	21%	170,405		170,405	22%
4030 - Sales - Machine Bld	13,647		13,647	5%	38,338		38,338	5%
4040 - Sales - Field Srv					763		763	0%
4050 - Sales Debut	0		0	0%	6,500		6,500	1%
4910 - Sales Discounts - Fabricated					230		230	0%
<b>Cost of Goods Sold</b>	<b>78,518</b>	<b>0</b>	<b>78,518</b>	<b>27%</b>	<b>118,975</b>	<b>0</b>	<b>118,975</b>	<b>15%</b>
<b>Gross Profit</b>	<b>210,021</b>	<b>10,009</b>	<b>200,012</b>	<b>73%</b>	<b>666,165</b>	<b>90,045</b>	<b>576,120</b>	<b>85%</b>
<b>Gross Profit %</b>	<b>73%</b>	<b>100%</b>	<b>72%</b>	<b>0%</b>	<b>85%</b>	<b>100%</b>	<b>83%</b>	<b>0%</b>
<b>General &amp; Admin Expense</b>	<b>18,046</b>	<b>200</b>	<b>17,846</b>	<b>6%</b>	<b>196,700</b>	<b>1,800</b>	<b>194,900</b>	<b>25%</b>
<b>Manufacturing Expense</b>	<b>100,744</b>	<b>3,800</b>	<b>96,944</b>	<b>35%</b>	<b>39,344</b>	<b>34,200</b>	<b>5,144</b>	<b>5%</b>
<b>Total Expense</b>	<b>118,790</b>	<b>4,000</b>	<b>114,790</b>	<b>41%</b>	<b>236,043</b>	<b>36,000</b>	<b>200,043</b>	<b>30%</b>
<b>EBITDA</b>	<b>91,230</b>	<b>6,009</b>	<b>85,221</b>	<b>32%</b>	<b>430,121</b>	<b>54,045</b>	<b>376,076</b>	<b>55%</b>
<b>EBITDA Percent</b>	<b>32%</b>	<b>60%</b>	<b>31%</b>	<b>0%</b>	<b>55%</b>	<b>60%</b>	<b>54%</b>	<b>0%</b>
<b>Other Income &amp; Expense</b>	<b>0</b>	<b>500</b>	<b>-500</b>	<b>0%</b>	<b>999</b>	<b>4,500</b>	<b>-3,501</b>	<b>0%</b>
<b>Net Income (Loss)</b>	<b>91,230</b>	<b>5,509</b>	<b>85,721</b>	<b>32%</b>	<b>429,122</b>	<b>49,545</b>	<b>379,577</b>	<b>55%</b>
<b>Net Income Loss %</b>	<b>32%</b>	<b>55%</b>	<b>31%</b>	<b>0%</b>	<b>55%</b>	<b>55%</b>	<b>55%</b>	<b>0%</b>
<b>Divisional Totals</b>								
Revenue	288,539	10,009	278,530	100%	785,139	90,045	695,094	100%
Chicago Revenue	224,075	10,009	214,066	78%	608,968	90,045	518,923	78%
Rockford Revenue	42,6		42,6	5%	127,430	0	127,430	16%
Evansville Revenue	21,8		21,8	1%				
<b>Cost of Goods Sold</b>	<b>78,518</b>							
<b>Expenses</b>	<b>118,790</b>							
<b>Other Income &amp; Expense</b>								

With FastClose Designer, Power-Users create reports and publish their work for use in FastClose applications, or for distribution via channels like email, network server, and web service endpoint.

Templates and Solutions are starting points that allow your team to create reports easily and intuitively. They are delivered for all ERP modules and elevate FastClose from Tool to Solution.

Create specialized Hierarchies or import them from your ERP to build structured reports like Income Statements and Balance Sheets. Aggregate detail values to a parent level, apply formatting, and use the Calculation engine.

The Calculation engine enables calculations like actual-to-budget variances, quarter and year-to-date, and powerful conditional calculations.

Drill to related data with delivered Drill-Throughs, change the delivered ones, or create your own. Surf the data, drilling from one report to related reports, following the number trail and gaining insight into your business like never before.



## Read & Drill

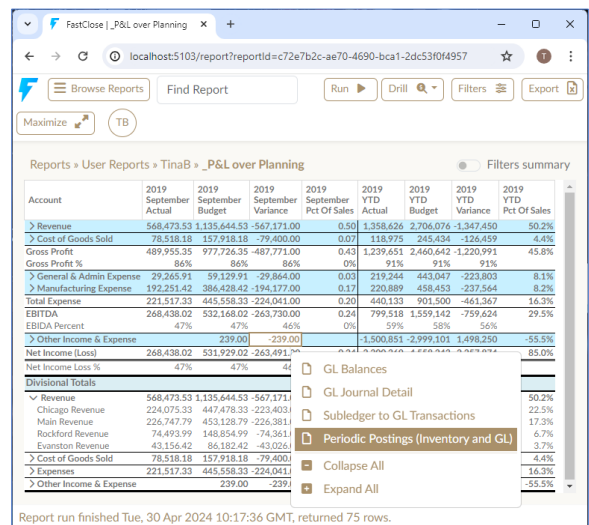
Read & Drill Users can run their reports via a web browser on their computer or smartphone.

Use your PC, Mac, iPad, iPhone, or Android to set filter criteria, run reports, and drill through to detail.

FastClose Reader's feature complete functionality lets you drill around to research ERP business issues, using the Hierarchy structures, Calculated values, Variables, and Formatting designed in your reports.

Run to retrieve live data at any time and drill to the detail, speeding up month end. Accurate, up-to-date reporting at the push of a button.

FastClose Reader is where you are when you want it.



**Reports » User Reports » TinaB » P&L over Planning**

Account	2019 September Actual	2019 September Budget	2019 September Variance	2019 September Pct Of Sales	2019 YTD Actual	2019 YTD Budget	2019 YTD Variance	2019 YTD Pct Of Sales
<b>Revenue</b>	<b>568,473.53</b>	<b>1,135,644.53</b>	<b>-567,171.00</b>	<b>0.50</b>	<b>1,358,626</b>	<b>2,706,076</b>	<b>-1,347,450</b>	<b>50.2%</b>
> Cost of Goods Sold	78,518.18	157,918.18	-79,400.00	0.07	118,975	245,434	-126,459	4.6%
<b>Gross Profit</b>	<b>489,955.35</b>	<b>977,726.35</b>	<b>-487,771.00</b>	<b>0.43</b>	<b>1,239,651</b>	<b>2,460,642</b>	<b>-1,220,991</b>	<b>45.6%</b>
<b>Gross Profit %</b>	<b>86%</b>	<b>86%</b>	<b>86%</b>	<b>0%</b>	<b>91%</b>	<b>91%</b>	<b>91%</b>	<b>0%</b>
> General & Admin Expense	29,265.91	59,129.91	-29,864.00	0.03	219,244	443,047	-223,803	8.1%
> Manufacturing Expense	192,251.42	384,432.42	-192,181.00	0.17	220,889	458,453	-237,564	8.2%
<b>Total Expense</b>	<b>221,517.33</b>	<b>443,562.33</b>	<b>-222,045.00</b>	<b>0.20</b>	<b>440,133</b>	<b>901,500</b>	<b>-461,367</b>	<b>16.3%</b>
<b>EBITDA</b>	<b>268,438.02</b>	<b>532,164.02</b>	<b>-263,726.00</b>	<b>0.24</b>	<b>799,518</b>	<b>1,559,142</b>	<b>-759,624</b>	<b>29.5%</b>
<b>EBITDA Percent</b>	<b>47%</b>	<b>47%</b>	<b>46%</b>	<b>0%</b>	<b>59%</b>	<b>58%</b>	<b>56%</b>	<b>0%</b>
> Other Income & Expense	239.00		239.00		1,500,851	2,999,101	1,498,250	-55.5%
<b>Net Income (Loss)</b>	<b>268,438.02</b>	<b>531,929.02</b>	<b>-263,491.00</b>	<b>0.24</b>	<b>799,518</b>	<b>1,559,142</b>	<b>-759,624</b>	<b>29.5%</b>
<b>Net Income Loss %</b>	<b>47%</b>	<b>47%</b>	<b>46%</b>	<b>0%</b>	<b>59%</b>	<b>58%</b>	<b>56%</b>	<b>0%</b>
<b>Divisional Totals</b>								
Revenue	568,473.53	1,135,644.53	-567,171.00	0.50	1,358,626	2,706,076	-1,347,450	50.2%
Chicago Revenue	224,075.33	447,478.33	-223,403.00	0.22	608,968	1,214,956	-605,988	22.5%
Main Revenue	226,747.79	453,128.79	-226,381.00	0.22	610,933	1,226,357	-615,424	22.5%
Rockford Revenue	74,493.99	148,987.99	-74,494.00	0.07	192,181	384,362	-192,181	7.7%
Evansville Revenue	43,156.42	86,312.84	-43,156.42	0.04	107,536	215,072	-107,536	4.3%
> Cost of Goods Sold	78,518.18	157,918.18	-79,400.00	0.07	118,975	245,434	-126,459	4.6%
> Expenses	221,517.33	443,562.33	-222,045.00	0.20	440,133	901,500	-461,367	16.3%
> Other Income & Expense	239.00		239.00		1,500,851	2,999,101	1,498,250	-55.5%

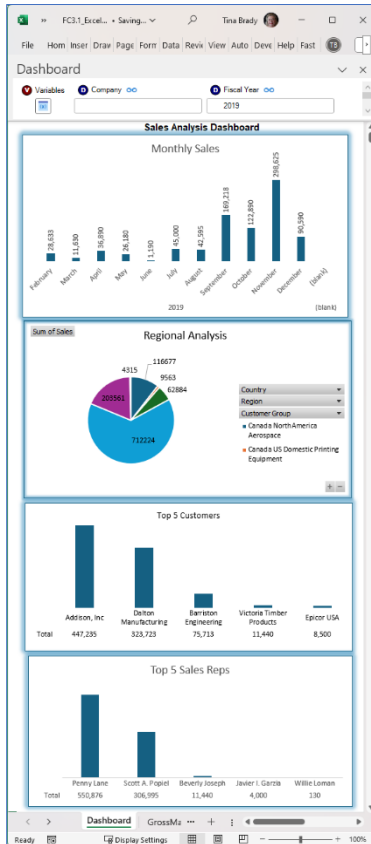
# FastClose has the right tool for every user.



## Excel Add-In

For Excel Users to run their reports directly within Microsoft Excel.

With the FastClose Excel Add-In, your team can create and drive models that answer “What If?” scenarios, knowing their data is based on the single source of truth; your ERP data.



The report shows the following data for 2019:

Account	2019 Actual	2019 Budget	2019 Variance	2019 Pct Of Sales	2019 YTD Actual	2019 YTD Budget	2019 YTD Variance	2019 YTD Pct Of Sales
Revenue	568,473.53	1,135,644.53	-567,171.00	0.50	1,358,626	2,706,076	-1,347,450	50.2%
Cost of Goods Sold	78,518.18	157,918.18	-79,400.00	0.07	118,975	245,434	-126,459	4.4%
Gross Profit	489,955.35	977,726.35	-487,771.00	0.43	1,239,651	2,460,642	-1,220,991	45.8%
Gross Profit %	86%	86%	86%	0%	91%	91%	91%	91%
General & Admin Expense	29,255.91	59,129.91	-29,864.00	0.03	219,244	443,047	-223,803	8.1%
Main Revenue	192,251.42	386,428.42	-194,177.00	0.17	220,889	458,453	-237,564	8.2%
Manufacturing Expense	221,517.33	445,558.33	-224,041.00	0.20	440,133	901,500	-461,367	16.3%
Total Expense	268,438.02	532,168.02	-263,730.00	0.24	799,518	1,559,142	-759,624	29.5%
EBITDA	221,517.33	445,558.33	-224,041.00	0.20	440,133	901,500	-461,367	16.3%
EBITDA Percent	47%	47%	47%	0%	59%	59%	59%	59%
Other Income & Expense	239.00	239.00	0.00	0.00	-1,500,851	-2,999,101	1,498,250	-55.5%
Net Income (Loss)	268,438.02	531,929.02	-263,491.00	0.24	2,300,369	4,558,243	-2,257,874	85.0%
Net Income Loss %	47%	47%	46%	0%	169%	168%	168%	168%

Run your reports in Excel, setting dynamic filter values as needed, and using the Hierarchy, Calculations, and formatting created in Designer. Link Filters across multiple reports so criteria changed for one report are applied to others.

FastClose secures your report definitions in its Repository, allowing users to safely run reports and visualizations within Excel. This increases reporting integrity, and eliminates the risk of formulas in spreadsheets becoming corrupted and returning inaccurate results.



## Planning and Budgeting

Blend live actuals from your ERP system with planning data from your budget holders.

With FastClose Planning and Budgeting, you can plan against the natural account, segment combinations, or the entire GL account. And by reporting the latest submitted budgets alongside live ERP actuals automatically in Excel, you won't need to manually combine that data.

Budget holders can submit their budgets within Excel, taking advantage of all the modelling capability that provides. Create multiple budgets to compare what-if scenarios. Report budget scenarios over ERP actuals to inform budget performance across periods, quarters, and years.

Home

Insert

Draw

Export Layout

Formulas

Data

Review

View

Automatic

Developer Tools

FastClose

Save

Undo

Redo

Print

Print Range

Print Setup

Print Preview

Print All

Print Range

Print Setup

Print Preview

Print All

Run

Exit

Quit

Close

Save

Save As

Save Recent

Save All

Save Recent

Save All

Report

Planning

Security

Forms

Change Password

Save This Sheet

Webhook Options

About FastClose

Autosave Autosave

Logging User Activity

Comments

Help

OL6 Reporting / Replanning for This Year

Company

Department

Division

Account

2019 Actual

2019 Budget

2019 Variance

2019 Pct Of Sales

2019 YTD Actual

2019 YTD Budget

2019 YTD Variance

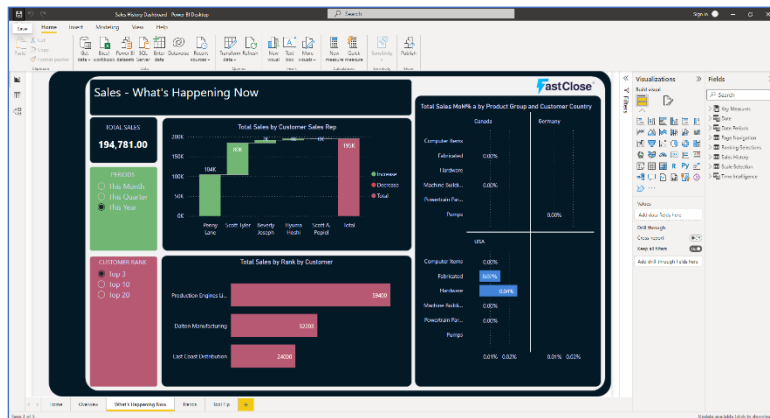
2019 YTD Pct Of Sales

Company	Department	Division	Account	2019 Actual	2019 Budget	2019 Variance	2019 Pct Of Sales	2019 YTD Actual	2019 YTD Budget	2019 YTD Variance	2019 YTD Pct Of Sales	
1	Epicor USA	General & Admin	Chicago	4000	Salaries - Marketing	-179,232	-18,200.43	-33,652.10	-45,209.52	-28,767.88	-11,298.38	-41,289.25
2	Epicor USA	General & Admin	Chicago	4000	Salaries - Marketing	-179,232	-18,200.43	-33,652.10	-45,209.52	-28,767.88	-11,298.38	-41,289.25
3	Epicor USA	General & Admin	Chicago	4000	Salaries - Marketing	-179,232	-18,200.43	-33,652.10	-45,209.52	-28,767.88	-11,298.38	-41,289.25
4	Epicor USA	General & Admin	Chicago	4000	Salaries - Marketing	-179,232	-18,200.43	-33,652.10	-45,209.52	-28,767.88	-11,298.38	-41,289.25
5	Epicor USA	General & Admin	Chicago	4000	Salaries - Marketing	-179,232	-18,200.43	-33,652.10	-45,209.52	-28,767.88	-11,298.38	-41,289.25
6	Epicor USA	General & Admin	Chicago	4000	Salaries - Marketing	-179,232	-18,200.43	-33,652.10	-45,209.52	-28,767.88	-11,298.38	-41,289.25
7	Epicor USA	General & Admin	Chicago	4000	Salaries - Marketing	-179,232	-18,200.43	-33,652.10	-45,209.52	-28,767.88	-11,298.38	-41,289.25
8	Epicor USA	General & Admin	Chicago	4000	Salaries - Marketing	-179,232	-18,200.43	-33,652.10	-45,209.52	-28,767.88	-11,298.38	-41,289.25
9	Epicor USA	General & Admin	Chicago	4000	Salaries - Marketing	-179,232	-18,200.43	-33,652.10	-45,209.52	-28,767.88	-11,298.38	-41,289.25
10	Epicor USA	General & Admin	Chicago	4000	Salaries - Marketing	-179,232	-18,200.43	-33,652.10	-45,209.52	-28,767.88	-11,298.38	-41,289.25
11	Epicor USA	General & Admin	Chicago	4000	Salaries - Marketing	-179,232	-18,200.43	-33,652.10	-45,209.52	-28,767.88	-11,298.38	-41,289.25
12	Epicor USA	General & Admin	Chicago	4000	Salaries - Marketing	-179,232	-18,200.43	-33,652.10	-45,209.52	-28,767.88	-11,298.38	-41,289.25
13	Epicor USA	General & Admin	Chicago	4000	Salaries - Marketing	-179,232	-18,200.43	-33,652.10	-45,209.52	-28,767.88	-11,298.38	-41,289.25
14	Epicor USA	General & Admin	Chicago	4000	Salaries - Marketing	-179,232	-18,200.43	-33,652.10	-45,209.52	-28,767.88	-11,298.38	-41,289.25
15	Epicor USA	General & Admin	Chicago	4000	Salaries - Marketing	-179,232	-18,200.43	-33,652.10	-45,209.52	-28,767.88	-11,298.38	-41,289.25
16	Epicor USA	General & Admin	Chicago	4000	Salaries - Marketing	-179,232	-18,200.43	-33,652.10	-45,209.52	-28,767.88	-11,298.38	-41,289.25
17	Epicor USA	General & Admin	Chicago	4000	Salaries - Marketing	-179,232	-18,200.43	-33,652.10	-45,209.52	-28,767.88	-11,298.38	-41,289.25
18	Epicor USA	General & Admin	Chicago	4000	Salaries - Marketing	-179,232	-18,200.43	-33,652.10	-45,209.52	-28,767.88	-11,298.38	-41,289.25
19	Epicor USA	General & Admin	Chicago	4000	Salaries - Marketing	-179,232	-18,200.43	-33,652.10	-45,209.52	-28,767.88	-11,298.38	-41,289.25
20	Epicor USA	General & Admin	Chicago	4000	Salaries - Marketing	-179,232	-18,200.43	-33,652.10	-45,209.52	-28,767.88	-11,298.38	-41,289.25
21	Epicor USA	General & Admin	Chicago	4000	Salaries - Marketing	-179,232	-18,200.43	-33,652.10	-45,209.52	-28,767.88	-11,298.38	-41,289.25
22	Epicor USA	General & Admin	Chicago	4000	Salaries - Marketing	-179,232	-18,200.43	-33,652.10	-45,209.52	-28,767.88	-11,298.38	-41,289.25
23	Epicor USA	General & Admin	Chicago	4000	Salaries - Marketing	-179,232	-18,200.43	-33,652.10	-45,209.52	-28,767.88	-11,298.38	-41,289.25
24	Epicor USA	General & Admin	Chicago	4000	Salaries - Marketing	-179,232	-18,200.43	-33,652.10	-45,209.52	-28,767.88	-11,298.38	-41,289.25
25	Epicor USA	General & Admin	Chicago	4000	Salaries - Marketing	-179,232	-18,200.43	-33,652.10	-45,209.52	-28,767.88	-11,298.38	-41,289.25
26	Epicor USA	General & Admin	Chicago	4000	Salaries - Marketing	-179,232	-18,200.43	-33,652.10	-45,209.52	-28,767.88	-11,298.38	-41,289.25
27	Epicor USA	General & Admin	Chicago	4000	Salaries - Marketing	-179,232	-18,200.43	-33,652.10	-45,209.52	-28,767.88	-11,298.38	-41,289.25
28	Epicor USA	General & Admin	Chicago	4000	Salaries - Marketing	-179,232	-18,200.43	-33,652.10	-45,209.52	-28,767.88	-11,298.38	-41,289.25
29	Epicor USA	General & Admin	Chicago	4000	Salaries - Marketing	-179,232	-18,200.43	-33,652.10	-45,209.52	-28,767.88	-11,298.38	-41,289.25
30	Epicor USA	General & Admin	Chicago	4000	Salaries - Marketing	-179,232	-18,200.43	-33,652.10	-45,209.52	-28,767.88	-11,298.38	-41,289.25
31	Epicor USA	General & Admin	Chicago	4000	Salaries - Marketing	-179,232	-18,200.43	-33,652.10	-45,209.52	-28,767.88	-11,298.38	-41,289.25
32	Epicor USA	General & Admin	Chicago	4000	Salaries - Marketing	-179,232	-18,200.43	-33,652.10	-45,209.52	-28,767.88	-11,298.38	-41,289.25
33	Epicor USA	General & Admin	Chicago	4000	Salaries - Marketing	-179,232	-18,200.43	-33,652.10	-45,209.52	-28,767.88	-11,298.38	-41,289.25
34	Epicor USA	General & Admin	Chicago	4000	Salaries - Marketing	-179,232	-18,200.43	-33,652.10	-45,209.52	-28,767.88	-11,298.38	-41,289.25
35	Epicor USA	General & Admin	Chicago	4000	Salaries - Marketing	-179,232	-18,200.43	-33,652.10	-45,209.52	-28,767.88	-11,298.38	-41,289.25
36	Epicor USA	General & Admin	Chicago	4000	Salaries - Marketing	-179,232	-18,200.43	-33,652.10	-45,209.52	-28,767.88	-11,298.38	-41,289.25
37	Epicor USA	General & Admin	Chicago	4000	Salaries - Marketing	-179,232	-18,200.43	-33,652.10	-45,209.52	-28,767.88	-11,298.38	-41,289.25
38	Epicor USA	General & Admin	Chicago	4000	Salaries - Marketing	-179,232	-18,200.43	-33,652.10	-45,209.52	-28,767.88	-11,298.38	-41,289.25
39	Epicor USA	General & Admin	Chicago	4000	Salaries - Marketing	-179,232	-18,200.43	-33,652.10	-45,209.52	-28,767.88	-11,298.38	-41,289.25
40	Epicor USA	General & Admin	Chicago	4000	Salaries - Marketing	-179,232	-18,200.43	-33,652.10	-45,209.52	-28,767.88	-11,298.38	-41,289.25
41	Epicor USA	General & Admin	Chicago	4000	Salaries - Marketing	-179,232	-18,200.43	-33,652.10	-45,209.52	-28,767.88	-11,298.38	-41,289.25
42	Epicor USA	General & Admin	Chicago	4000	Salaries - Marketing	-179,232	-18,200.43	-33,652.10	-45,209.52	-28,767.88	-11,298.38	-41,289.25
43	Epicor USA	General & Admin	Chicago	4000	Salaries - Marketing	-179,232	-18,200.43	-33,652.10	-45,209.52	-28,767.88	-11,298.38	-41,289.25
44	Epicor USA	General & Admin	Chicago	4000	Salaries - Marketing	-179,232	-18,200.43	-33,652.10	-45,209.52	-28,767.88	-11,298.38	-41,289.25
45	Epicor USA	General & Admin	Chicago	4000	Salaries - Marketing	-179,232	-18,200.43	-33,652.10	-45,209.52	-28,767.88	-11,298.38	-41,289.25
46	Epicor USA	General & Admin	Chicago	4000	Salaries - Marketing	-179,232	-18,200.43	-33,652.10	-45,209.52	-28,767.88	-11,298.38	-41,289.25
47	Epicor USA	General & Admin	Chicago	4000	Salaries - Marketing	-179,232	-18,200.43	-33,652.10	-45,209.52	-28,767.88	-11,298.38	-41,289.25
48	Epicor USA	General & Admin	Chicago	4000	Salaries - Marketing	-179,232	-18,200.43	-33,652.10	-45,209.52	-28,767.88	-11,298.38	-41,289.25
49	Epicor USA	General & Admin	Chicago	4000	Salaries - Marketing	-179,232	-18,200.43	-33,652.10	-45,209.52	-28,767.88	-11,298.38	-41,289.25
50	Epicor USA	General & Admin	Chicago	4000	Salaries - Marketing	-179,232	-18,200.43	-33,652.10	-45,209.52	-28,767.88	-11,298.38	-41,289.25
51	Epicor USA	General & Admin	Chicago	4000	Salaries - Marketing	-179,232	-18,200.43	-33,652.10	-45,209.52	-28,767.88	-11,298.38	-41,289.25
52	Epicor USA	General & Admin	Chicago	4000	Salaries - Marketing	-179,232	-18,200.43	-33,652.10	-45,209.52	-28,767.88	-11,298.38	-41,289.25
53	Epicor USA	General & Admin	Chicago	4000	Salaries - Marketing	-179,232	-18,200.43	-33,652.10	-45,209.52	-28,767.88	-11,298.38	-41,289.25
54	Epicor USA	General & Admin	Chicago	4000	Salaries - Marketing	-179,232	-18,200.43	-33,652.10	-45,209.52	-28,767.88	-11,298.38	-41,289.25
55	Epicor USA	General & Admin	Chicago	4000	Salaries - Marketing	-179,232	-18,200.43	-33,652.10	-45,209.52	-28,767.88	-11,298.38	-41,289.25
56	Epicor USA	General & Admin	Chicago	4000	Salaries - Marketing	-179,232	-18,200.43	-33,652.10	-45,209.52	-28,767.88	-11,298.38	-41,289.25
57	Epicor USA	General & Admin	Chicago	4000	Salaries - Marketing	-179,232	-18,200.43	-33,652.10	-45,209.52	-28,767.88	-11,298.38	-41,289.25
58	Epicor USA	General & Admin	Chicago	4000	Salaries - Marketing	-179,232	-18,200.43	-33,652.10	-45,209.52	-28,767.88	-11,298.38	-41,289.25
59	Epicor USA	General & Admin	Chicago	4000	Salaries - Marketing	-179,232	-18,200.43	-33,652.10	-45,209.52	-28,767.88	-11,298.38	-41,289.25
60	Epicor USA	General & Admin	Chicago	4000	Salaries - Marketing	-179,232	-18,200.43	-33,652.10	-45,209.52	-28,767.88	-11,298.38	-41,289.25
61	Epicor USA	General & Admin	Chicago	4000	Salaries - Marketing	-179,232	-18,200.43	-33,652.10	-45,209.52	-28,767.88	-11,298.38	-41,289.25
62	Epicor USA	General & Admin	Chicago	4000	Salaries - Marketing	-179,232	-18,200.43	-33,652.10	-45,209.52	-28,767.88	-11,298.38	-41,289.25
63	Epicor USA	General & Admin	Chicago	4000	Salaries - Marketing	-179,232	-18,200.43	-33,652.10	-45,209.52	-28,767.88	-11,298.38	-41,289.25
64	Epicor USA	General & Admin	Chicago	4000	Salaries - Marketing	-179,232	-18,200.43	-33,652.10	-45,209.52	-28,767.88	-11,298.38	-41,289.25
65	Epicor USA	General & Admin	Chicago	4000	Salaries - Marketing	-179,232	-18,200.43	-33,652.10	-45,209.52	-28,767.88	-11,298.38	-41,289.25
66	Epicor USA	General & Admin	Chicago	4000	Salaries - Marketing	-179,232	-18,200.43	-33,652.10	-45,209.52	-28,767.88	-11,298.38	-41,289.25
67	Epicor USA	General & Admin	Chicago	4000	Salaries - Marketing	-179,232	-18,200.43	-33,652.10	-45,209.52	-28,767.88	-11,298.38	-41,289.25
68	Epicor USA	General & Admin	Chicago	4000	Salaries - Marketing	-179,232	-18,200.43	-33,652.10	-45,209.52	-28,767.88	-11,298.38	-41,289.25
69	Epicor USA	General & Admin	Chicago	4000	Salaries - Marketing	-179,232	-18,200.43	-33,652.10	-45,209.52	-28,767.88	-11,298.38	-41,289.25
70	Epicor USA	General & Admin	Chicago	4000	Salaries - Marketing	-179,232	-18,200.43	-33,652.10	-45,209.52	-28,767.88	-11,298.38	-41,289.25
71	Epicor USA	General & Admin	Chicago	4000	Salaries - Marketing	-179,232	-18,200.43	-33,652.10	-45,209.52	-28,767.88	-11,298.38	-41,289.25
72	Epicor USA	General & Admin	Chicago	4000	Salaries - Marketing	-179,232	-18,200.43	-33,652.10	-45,209.52	-28,767.88	-11,298.38	-41,289.25
73	Epicor USA	General & Admin	Chicago	4000	Salaries - Marketing	-179,232	-18,200.43	-33,652.10	-45,209.52	-28,767.88	-11,298.38	-41,289.25
74	Epicor USA	General & Admin	Chicago	4000	Salaries - Marketing	-179,232	-18,200.43	-33,652.10	-45,209.52	-28,767.88	-11,298.38	-41,289.25
75	Epicor USA	General & Admin	Chicago	4000	Salaries - Marketing	-179,232	-18,200.43	-33,652.10	-45,209.52	-28,767.88	-11,298.38	-41,289.25
76	Epicor USA	General & Admin	Chicago	4000	Salaries - Marketing	-179,232	-18,200.43	-33,652.10	-45,209.52	-28,767.88	-11,298.38	-41,289.25
77	Epicor USA	General & Admin	Chicago	4000	Salaries - Marketing	-179,232	-18,200.43	-33,652.10	-45,209.52	-28,767.88	-11,298.38	-41,289.25
78	Epicor USA	General & Admin	Chicago	4000	Salaries - Marketing	-179,232	-18,200.43	-33,652.10	-45,209.52	-28,767.88	-11,298.38	-41,289.25
79	Epicor USA	General & Admin	Chicago	4000	Salaries - Marketing	-179,232	-18,200.43	-33,652.10	-45,209.52	-28,767.88	-11,298.38	-41,289.25

## Built for Business

Business Users know what they need but may not know their way around the ERP database. With interfaces that are built for business, FastClose lets power users create complex reports to exacting business needs and lets report users run their reports with the filter values they need, all without waiting for IT requests to be fulfilled.

Create formatted reports with Filters, Hierarchies, Calculations, and Drills to related data. Pull your ERP data and format it as you wish. Run reports on a PC or smartphone web browser

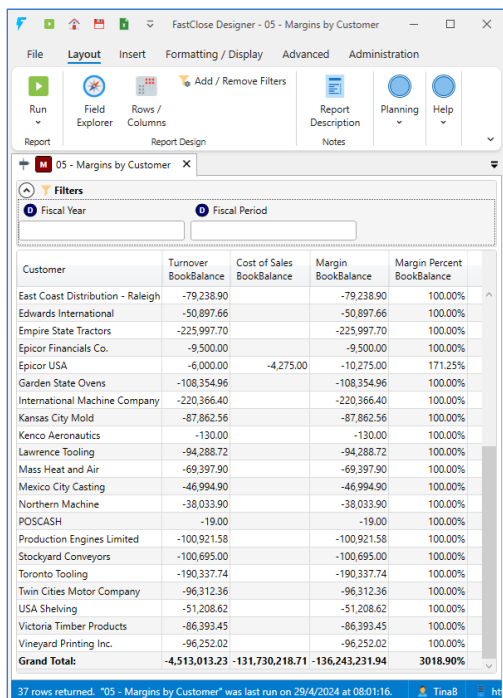


### Visualize Your Business with Power BI KPIs

- ✓ Built-in understanding of your ERP data structure
- ✓ Installation Complete in under 40 minutes
- ✓ Delivered Templates & Solutions provide value immediately
- ✓ Provides the right tools for a variety of users

## Customer Driven

Our customers drive product enhancement. As your business requirements grow, FastClose will incorporate enhancements into the Templates and Solutions. All customers benefit from these ideas and features. Once the software is installed, quick P&L and Balance Sheet reports can be produced in seconds for all data dimensions, with multi company consolidation, divisional analysis, and more. To get help when and where you need it, contextual help is available throughout the app and an extensive library of video guides is available online. FastClose can also deliver online training and report design workshops.



The screenshot shows the 'FastClose Designer - 05 - Margins by Customer' interface. It includes a 'Filters' section with 'Fiscal Year' and 'Fiscal Period' dropdowns. Below the filters is a table with columns: Customer, Turnover BookBalance, Cost of Sales BookBalance, Margin BookBalance, and Margin Percent BookBalance. The table lists various customers and their corresponding financial data.

Customer	Turnover BookBalance	Cost of Sales BookBalance	Margin BookBalance	Margin Percent BookBalance
East Coast Distribution - Raleigh	-79,238.90		-79,238.90	100.00%
Edwards International	-50,897.66		-50,897.66	100.00%
Empire State Tractors	-225,997.70		-225,997.70	100.00%
Epicor Financials Co.	-9,500.00		-9,500.00	100.00%
Epicor USA	-6,000.00	-4,275.00	-10,275.00	171.25%
Garden State Ovens	-108,354.96		-108,354.96	100.00%
International Machine Company	-220,366.40		-220,366.40	100.00%
Kansas City Mold	-87,862.56		-87,862.56	100.00%
Kenco Aeronautics	-130.00		-130.00	100.00%
Lawrence Tooling	-94,288.72		-94,288.72	100.00%
Mass Heat and Air	-69,397.90		-69,397.90	100.00%
Mexico City Casting	-46,994.90		-46,994.90	100.00%
Northern Machine	-38,033.90		-38,033.90	100.00%
POSCASH	-19.00		-19.00	100.00%
Production Engines Limited	-100,921.58		-100,921.58	100.00%
Stockyard Conveyors	-100,695.00		-100,695.00	100.00%
Toronto Tooling	-190,337.74		-190,337.74	100.00%
Twin Cities Motor Company	-96,312.36		-96,312.36	100.00%
USA Shelving	-51,208.62		-51,208.62	100.00%
Victoria Timber Products	-86,393.45		-86,393.45	100.00%
Vineyard Printing Inc.	-96,252.02		-96,252.02	100.00%
<b>Grand Total:</b>	<b>-4,513,013.23</b>	<b>-131,730,218.71</b>	<b>-136,243,231.94</b>	<b>3018.90%</b>

## How We Do It

FastClose is a multi-dimensional reporting and inquiry tool that combines your live ERP data with FastClose Templates to provide up-to-the-moment-accurate results.

We link to all the key tables in your ERP system, ensuring the data elements you need are defined and available as selection criteria and reportable data. This means you don't have to define the tables you need or the data you want to report. FastClose has done that for you.

Templates are the key to FastClose. They provide the starting point for your power users to quickly build reports and move FastClose from Tool to Reporting Solution. And they're delivered for every ERP module.

The delivered report Templates and Solutions support your entire ERP: General Ledger, Accounts Payable, Accounts Receivable, Sales Management, Purchase Management, Inventory Management, Job Management., Asset Management, Cash Management, Demand Management, Project Management.

